

# CRESCENT LAKE / DUNNS CREEK PUTNAM COUNTY, FL PROJECT CONDITION SURVEY FY21 8-FOOT PROJECT

**SURVEY NOTES**

- REFER TO SURVEY NO. 21-108.
- ALL ELEVATIONS ARE BELOW THE CHART DATUM UNLESS PRECEDED BY A (+) SIGN.
- PLANE COORDINATES ARE BASED ON THE TRANSVERSE MERCATOR PROJECTION FOR THE EAST ZONE OF FLORIDA AND REFERENCED TO THE CURRENT REALIZATION OF THE NORTH AMERICAN DATUM OF 1983 (NAD83), BASED ON THE NOAA NATIONAL SPATIAL REFERENCE SYSTEM (NSRS).
- THIS SURVEY WAS PERFORMED USING REAL-TIME KINEMATIC (RTK) GPS POSITIONING WITH THE FOLLOWING REFERENCE BASE LOCATION:  
FLORIDA PERMANENT REFERENCE NETWORK (FPRN)  
FROM THE ST JOHNS RIVER TO THE MOUTH OF CRESCENT LAKE, DEPTHS DEPICTED BY THIS SURVEY ARE REFERENCED TO MEAN LOWER LOW WATER (MLLW), TIDAL EPOCH 1983-2001, AS PUBLISHED BY THE NATIONAL OCEANIC AND ATMOSPHERIC ADMINISTRATION (NOAA).  
FROM THE MOUTH OF CRESCENT LAKE TO THE END OF THE PROJECT IN CRESCENT CITY, DEPTHS ARE REFERENCED TO MEAN SEA LEVEL (MSL) AS REPORTED BY THE NATIONAL OCEANIC AND ATMOSPHERIC ADMINISTRATION (NOAA).
- NOAA'S VDUTUM MODEL, AND PUBLISHED TIDE STATION DATA, WERE USED TO GENERATE A HYPACK KINEMATIC TIDE DATUM (KTD) MODEL. THIS KTD MODEL, BEING A COMBINATION OF THOSE TWO SOURCES, CANNOT BE CONSIDERED EQUIVALENT TO THE VDUTUM MODEL BECAUSE OF POSSIBLE ADDITIONS OR EDITS THERETO. DO NOT USE VDUTUM IN PLACE OF THE KTD FILE. THE KTD MODEL USED FOR THIS SURVEY IS:  
STJOHNSRIVER-20191202.KTD
- TIDAL REDUCTIONS WERE OBTAINED UTILIZING REAL-TIME KINEMATIC (RTK) GPS AND REFERENCED TO MLLW / MSL; UTILIZING THE KTD FILE REFERENCED ABOVE, AND CALIBRATED TO THE PUBLISHED MLLW / MSL HEIGHTS OF THE BENCHMARKS ASSOCIATED WITH THE TIDE GAGGE SITES SPECIFIED BELOW:  
NOAA TIDAL STATION 872-0855 FOR ENTIRE PROJECT (PID: A16986)
- VERTICAL MEASUREMENTS WERE MADE USING AN IMPACT SUBSEA ISA-500 SINGLE-FREQUENCY TRANSDUCER OPERATING AT 500 KHz (HIGH FREQUENCY). ALL SOUNDINGS SHOWN ARE IN HIGH FREQUENCY.

VESSEL	DATE OF SURVEY	CUT
SB-WELLS	16 APR 2021	CRESCENT LAKE
SB-WELLS	21 APR 2021	CRESCENT LAKE

- AIDS TO NAVIGATION WERE LOCATED DURING THIS SURVEY.
- THE INFORMATION DEPICTED ON THIS MAP REPRESENTS THE RESULTS OF SURVEYS MADE ON THE DATES INDICATED ABOVE AND CAN ONLY BE CONSIDERED AS INDICATING THE GENERAL CONDITIONS AT THAT TIME. THIS CHART IS SOLELY FOR THE DISTRIBUTION OF AVAILABLE DEPTHS AT THE TIME OF THE SURVEY.
- SURVEY ACCURACY PERFORMANCE STANDARDS, QUALITY CONTROL, AND QUALITY ASSURANCE REQUIREMENTS WERE FOLLOWED DURING THIS SURVEY IN ACCORDANCE WITH USACE EM 1110-2-1003, HYDROGRAPHIC SURVEYING, 30 NOV 2013.

**LEGEND**

	MONUMENT
	LIGHTED BEACON
	GREEN DAYBEACON
	RED DAYBEACON
	RED LIGHTED BUOY
	GREEN LIGHTED BUOY
	CAN BUOY
	NUN BUOY
	TIDE STAFF
	PROJECT DEPTH

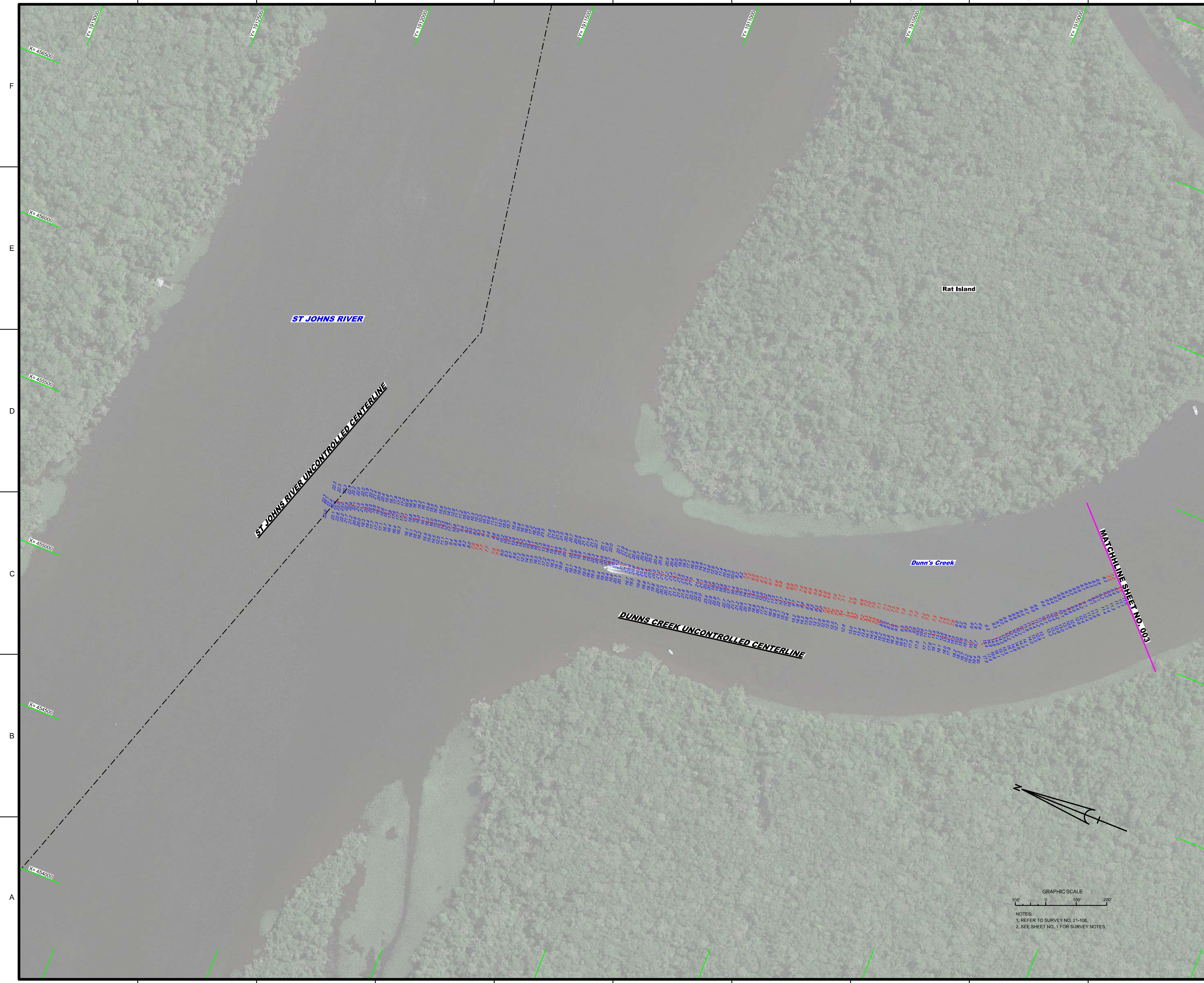
US Army Corps of Engineers  
Jacksonville District  
SAFETY ON THIS JOB  
DEPENDS ON YOU

DEPARTMENT OF THE ARMY  
JACKSONVILLE DISTRICT, CORPS OF ENGINEERS  
JACKSONVILLE, FLORIDA

CRESCENT LAKE / DUNNS CREEK  
PUTNAM COUNTY, FLORIDA  
PROJECT CONDITION SURVEY FY21  
8-FOOT PROJECT  
INDEX, LOCATION AND VICINITY  
MAP

Scale: AS SHOWN  
Drawing no. 1  
SHEET 01 OF 26





**US Army Corps of Engineers**  
Jacksonville District

**SAFETY ON THIS JOB DEPENDS ON YOU**


DEPARTMENT OF THE ARMY  
JACKSONVILLE DISTRICT, CORPS OF ENGINEERS  
JACKSONVILLE, FLORIDA

Checked By: GHR	Designed By: WRM	Drawn By: WRM	File No: W812EP-88-99-03X	Project Date: APR 2021
-----------------	------------------	---------------	---------------------------	------------------------

XXXXXXXXXXXXXXXXXXXX  
XXXXXXXXXXXXXXXXXXXX  
XXXXXXXXXXXXXXXXXXXX  
XXXXXXXXXXXXXXXXXXXX  
XXXXXXXXXXXXXXXXXXXX  
LAKE CRESSCENT DGN  
2-1086-88-BR04LDGN  
Reference files:  
2-1089-H001DGN

**PROJECT CONDITION SURVEY FY21**  
CRESCENT LAKE, DUNNS CREEK  
PUTNAM COUNTY, FLORIDA  
**8-FOOT PROJECT**  
DUNNS CREEK AT ST. JOHNS RIVER  
**PLAN**

Scale: AS SHOWN

Drawing no. **2**

SHEET 02 OF 26

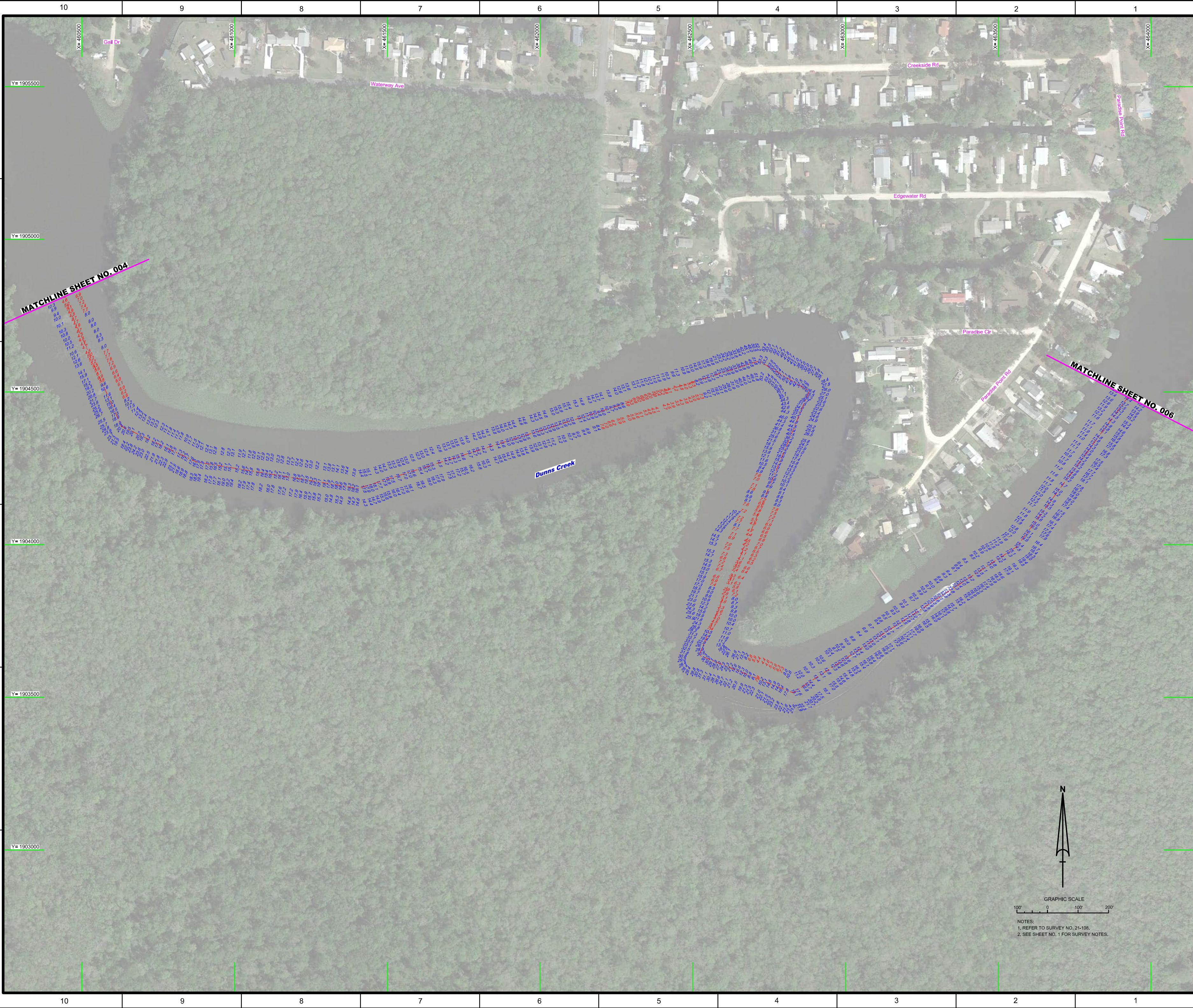













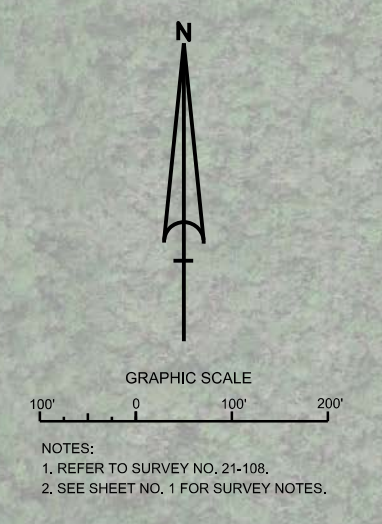
  
 US Army Corps of Engineers  
 Jacksonville District  
 SAFETY ON THIS JOB  
 DEPENDS ON YOU

DEPARTMENT OF THE ARMY  
 JACKSONVILLE DISTRICT, CORPS OF ENGINEERS  
 JACKSONVILLE, FLORIDA

Checked By: GMR  
 Designed By: WRM  
 Drawn By: WRM  
 File No: W81225-000-0004  
 Date: APR 2021  
 Reference File: 21-108-GS-BR04.DGN  
 File Name: 21-108-H040.DGN

CRESCENT LAKE, DUNN'S CREEK  
 PUTNAM COUNTY, FLORIDA  
**PROJECT CONDITION SURVEY FY21**  
**8-FOOT PROJECT**  
 DUNN'S CREEK  
**PLAN**

Scale: AS SHOWN  
 Drawing no.  
**5**  
 SHEET 05 OF 26



F  
E  
D  
C  
B  
A

10 9 8 7 6 5 4 3 2 1

MATCHLINE SHEET NO. 004

MATCHLINE SHEET NO. 006

Dunn's Creek

Waterway Ave

Creekside Rd

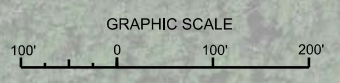
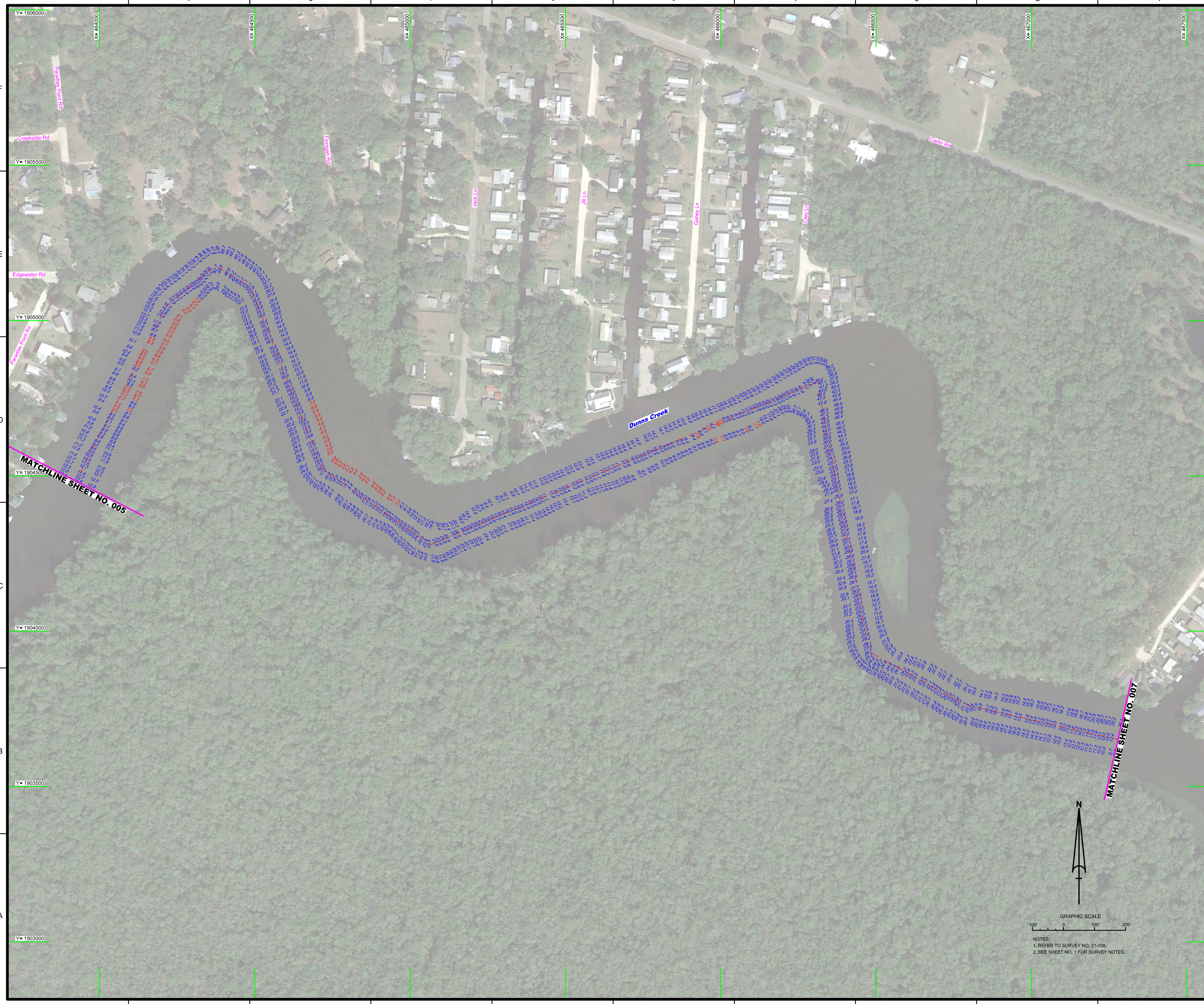
Edgewater Rd

Paradise Cir

Paradise Point Rd

MATCHLINE SHEET NO. 006





NOTES:  
1. REFER TO SURVEY NO. 21-108.  
2. SEE SHEET NO. 1 FOR SURVEY NOTES.

MATCHLINE SHEET NO. 005

MATCHLINE SHEET NO. 007

10 9 8 7 6 5 4 3 2 1

F

E

D

C

B

A

Y=1906000

Y=1905500

Y=1905000

Y=1904500

Y=1904000

Y=1903500

Y=1903000

X=464000

X=464500

X=465000

X=465500


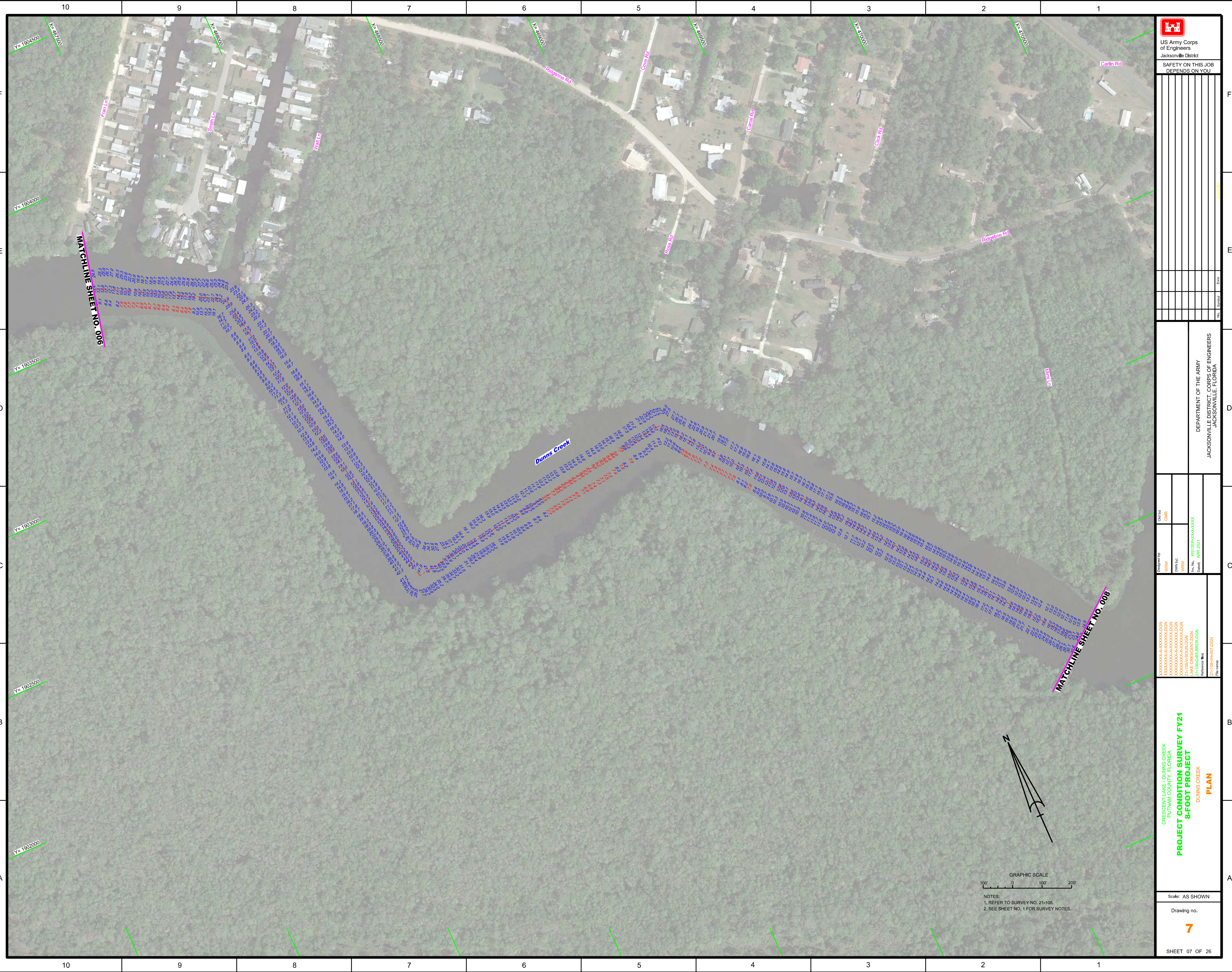
X=466000

X=466500

X=467000

X=467500





US Army Corps  
of Engineers  
Jacksonville District  
SAFETY ON THIS JOB  
DEPENDS ON YOU

DEPARTMENT OF THE ARMY  
JACKSONVILLE DISTRICT, CORPS OF ENGINEERS  
JACKSONVILLE, FLORIDA

Checked by: GMR  
Designed by: WRM  
DWG No: WRM  
File No: W1925E-000-0000  
Date: APR 2021  
Reference File: 21-108-PH07.DGN  
File Name: 21-108-PH07.DGN

CRESCENT LAKE, DUNNS CREEK  
PUTNAM COUNTY, FLORIDA  
**PROJECT CONDITION SURVEY FY21  
8-FOOT PROJECT**  
DUNNS CREEK  
**PLAN**



NOTES:  
1. REFER TO SURVEY NO. 21-108.  
2. SEE SHEET NO. 1 FOR SURVEY NOTES.

